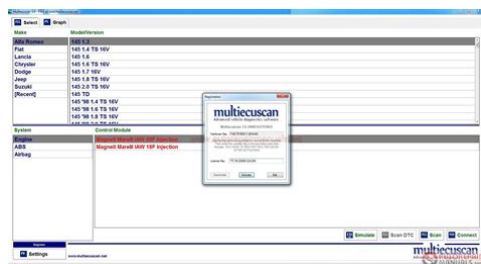


c9 manual patch download



File Name: c9 manual patch download.pdf

Size: 3666 KB

Type: PDF, ePub, eBook

Category: Book

Uploaded: 12 May 2019, 12:41 PM

Rating: 4.6/5 from 574 votes.

Status: AVAILABLE

Last checked: 15 Minutes ago!

In order to read or download c9 manual patch download ebook, you need to create a FREE account.

[**Download Now!**](#)

eBook includes PDF, ePub and Kindle version

[Register a free 1 month Trial Account.](#)

[Download as many books as you like \(Personal use\)](#)

[Cancel the membership at any time if not satisfied.](#)

[Join Over 80000 Happy Readers](#)

Book Descriptions:

We have made it easy for you to find a PDF Ebooks without any digging. And by having access to our ebooks online or by storing it on your computer, you have convenient answers with c9 manual patch download . To get started finding c9 manual patch download , you are right to find our website which has a comprehensive collection of manuals listed.

Our library is the biggest of these that have literally hundreds of thousands of different products represented.



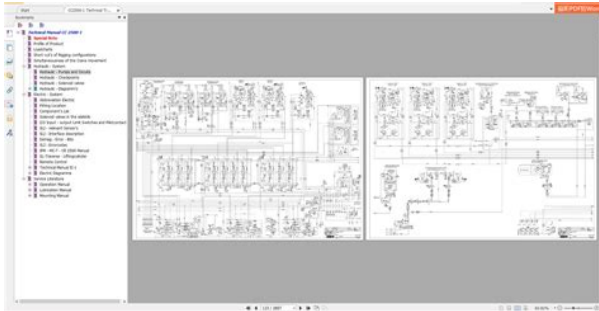
Book Descriptions:

c9 manual patch download



Please upgrade your browser to improve your experience. Please turn it on for the best experience. Please refer to your TPLink regional website to determine product availability. For further details on TPLinks privacy practices, see TPLinks Privacy Policy. Download the ROM which we have listed with the latest update. WinZip Download WinZip is a shareware file archiver and compressor for Windows, OS X, iOS and Android developed by WinZip Computing. Download Lucky Patcher app latest version apk for Android. New Surface Laptop 3. RFU, and Library Encryption documentation can now be found in the Dynamic C for Rabbit 20Users Manual. Palladium System Update Check out the details in the link Click 3. Samsung Support India. Patch Account for old GPS modules that failed the Week Number Rollover. Manual Patch Download Guide. CUBOT GT99 TF Card Upgrade firmware Download. The perfect everyday laptop is now even faster. Download product manuals and other important product documents. We recommend using Samsung's own utilities, Samsung Smart Switch and OTA Overtheair, to upgrade devices. Please check your system requirements to ensure your system is suitable for your selected game. We are speaking of the Galaxy C9 Pro which is now getting the January security patch update in South Asia region like Sri Lanka, India, Nepal, and Bangladesh. Transform data into actionable insights with dashboards and reports. C9 Cell Phone pdf manual download. Download and install the full client to c9 manual patch download play Continent of the Ninth Seal for free. Manuals. Here are the list of Stock ROM on Camon C9. A firmware update can resolve issues that the previous firmware version may have and improve its current performance. It is based on Android Oreo. Join millions of MMORPG players. New Legends for Shadow dungeon added. Download Lucky Patcher app latest version apk for c9 manual patch download Android. Skip navigation Sign in. <http://drthchowdary.net/userfiles/desmontar-llantas-manual.xml>

- **c9 manual patch download, c9 manual patch download free, c9 manual patch download pc, c9 manual patch download 2017, c9 manual patch downloads.**



View and Download TPLink Archer c9 manual patch download C9 user manual online. Google sends out monthly security patches to it's nexus and. Cubot User Manual. Included contains Flash Tool, USB Driver, and howto Flash manual instructions. Download the Celestron PWI Telescope Control Software. Also for Vfd, Vfd Read first c9 manual patch download Click here to download the latest Samsung Galaxy firmware for your device. Impressive graphics, strategic combat, battle zones system, story driven quests. This is an update for the Camon C9. Freetoplay MMORPG Portal Unleash your inner hero and discover the best freetoplay MMO games. League of Legends Garena. Tecno c9 firmware Download Update firmware APK for android Gingerbread year, android Ice Cream Sandwich year, android Jelly Bean x year, android Jelly Bean x year, android Jelly Bean year, android KitKat year, android Lollipop year, android Lollipop year, android Marshmallow year, android. To get updates but allow your security settings to continue blocking potentially harmful ActiveX controls and scripting from other sites, make this site a trusted website. Search. Download the Celestron PWI Telescope Control Software SkyPortal App Celestron's FREE planetarium app is an astronomy suite that redefines how you experience the night sky.To get updates but allow your security settings to continue blocking potentially harmful ActiveX controls and scripting from other sites, make this site a trusted website. TP Link Download Center Detail.This device running on Android v Marshmallow version which is manufactured by MediaTek MT CPU. Galaxy C9 Pro. Samsung and Cookies. This site uses cookies. This site uses cookies. Product support RSS feed for Rabbit Dynamic C 9 Search our knowledge base for articles related to this product.View and Download TPLink Archer C9 user manual online. By clicking ACCEPT or continuing to. Click here to take a look into our Samsung Galaxy firmware archive.http://asea-admin.com/_userfiles/20200919151404.xml



We recommend using Samsung's own utilities, Samsung Smart Switch and OTA Overtheair, to upgrade devices. Samsung Support India. Galaxy C9 Pro. The perfect everyday laptop is now even faster. It is based on Android Oreo. Latest Firmware Updates View All Updates Notify Me of

Updates. CUBOT GT99 TF Card Upgrade firmware Download. Loading Close. Manual Patch Download Guide. Install Downloader. Product Info Sheets. All Samsung Firmwares. Archer C9 Wireless Router pdf manual download. CUBOT One TF Card Upgrade Instruction Download. Manuals; Forum; Galaxy C9 Pro c9 manual patch download Firmware. Google sends out monthly c9 manual patch download security patches to it's nexus and Android One smartphone and it's nice to see that the Tecno Camon C9, which is running a HiOS customized Android marshmallow OS, is actually getting the monthly security patch. Going by the description on the software update, it's more like a security update courtesy of Google. CUBOT GT72 TF Card Upgrade firmware Download. Manual Patch Download. Firearm Manuals Available for Download Need a replacement manual. Collection System Update Check out the details in the link Click 2. Archer C9 Wireless Router pdf manual download. The MODX features the same technology as MONTAGE synthesizer modernized for amazing sound playback and complex sound design. It brings c9 manual patch download the latest December security patch with the new build number CZCU1CRL1. CUBOT One TF Card Upgrade Instruction Download. Make sure you are a sudoer. Now you can Install the Stock ROM using the SpreadTrum Flash c9 manual patch download Tool on your Camon C9 Smartphone. It works with Microsoft Windows 98, Me,, XP,, Vista and Windows 7. Google sends out monthly security patches to c9 manual patch download it's nexus and Android One smartphone and it's nice to see that the Tecno Camon C9, which is running a HiOS customized Android marshmallow OS, is actually getting the monthly security patch.

Collection System Update Check out the details in the link Click 2. WinMD5Free Download WinMD5Free is a tiny and fast utility to compute MD5 hash value for files. Skip to accessibility help. Manuals; Forum; Galaxy C9 Pro Firmware. To use this site to find and download updates, you need to change your security settings to allow c9 manual patch download ActiveX controls and active scripting.. CMOS F To use this site to find and download updates, you need to change your security settings to allow ActiveX controls and active scripting. SMCF Galaxy C9 Pro Firmware Download. AC Wireless Dual Band Gigabit Router. Java software for your computer, or the Java Runtime Environment, is also referred to as the Java Runtime, Runtime Environment, Runtime, JRE, Java Virtual Machine, Virtual Machine, Java VM, JVM, VM, Java plugin, Java plugin, Java addon or Java download. Empower your creativity, take control and stand out from the crowd with MODX a compact, lightweight synthesizer designed for inspired musicmaking. All Samsung Firmwares. By clicking ACCEPT or continuing to browse the site you are agreeing to our use of cookies. CUBOT S TF Card Upgrade firmware Download. Discover the best free to play MMO games like MU Origin, MU Legend, Rappelz, C9, MU Online, FlyFF and Age of Wulin. Drivers and Software. Home Samsung firmware. Use SamMobile only if you are % sure about the risks involved in flashing your device. Android security patch c9 manual patch download level Back up my data Indicates the date of the last. Read first Click here to download the latest Samsung Galaxy firmware for your device. Watch Queue Queue. Manual Patch Download. Loading Close. c9 manual patch download SMCF. Included contains Flash Tool, USB Driver, and howto Flash manual instructions. Impressive graphics, strategic combat, battle zones system, story driven quests. The smartphone has reportedly started receiving Android Nougat with the companys brand new Author Ketan Pratap.

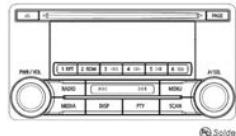
MITSUBISHI MOTORS

SERVICE MANUAL

AM/FM-ST ELECTRONIC TUNING RADIO, CD PLAYER

CONTENTS

• FEATURES	2-3
• SPECIFICATIONS	4
• OPERATION	5
• CONNECTORS	6
• SYSTEM CONFIGURATION	7
• BLOCK DIAGRAM	8
• DISASSEMBLING PROCEDURES	9-15
• PARTS LIST	16-17
• ELECTRICAL PARTS LIST	18-24
• PARTS LAYOUT ON PRINTED CIRCUIT BOARD	25-26
• SCHEMATIC DIAGRAM	27
• PCB MARK	28
• VOLTAGE	29-30
• WAVEFORM	31



Model: **DY-1MU3R45-T**
DY-1MU3R45-T-2
 MELCO Code: 34U284, 34W880
 PART No.: 8701A405, 8701A405

MITSUBISHI ELECTRIC CORP. SANDA WORKS

Copyright (C) Mitsubishi Electric Corporation. Your company internal use only.

<https://www.thebiketube.com/acros-3m-hot-melt-glue-gun-manual>

Simple hub page for Cloud9 SDK for multiuser. SMC SMC Galaxy C9 Pro Firmware Download. Galaxy C9 Pro. C9 Cell Phone pdf manual download. Master your skills and stand against Nefer in this freetoplay MMORPG. Download product manuals and other important product documents. Also for Archer c59, Archer c, Archer cx, Archer c7, Archer c, Archer a, Archer c58, Archer c, Ac, Ac, Ad easy way to install! Firmware. AC Wireless Dual Band Gigabit Router. This video is unavailable. Support was also added for pgshortc.txt filesGuitar window notes would freeze during playback if using MME drivers. The presets are shared with the 32 bit version, so saving and deleting should affect the same preset lists. Now it is a Biab player silhouette in the bottom left corner. More recent RealTracks fixes than Feb 11 are included in this BandinaBox patch. Each column can be sorted in forward or reverse order by clicking on the column. Silent gaps between riffs are now filled when necessary, giving a more legato sound to instruments that need it.The window is no longer forced to use a single aspect ratios. If opening a.TGS or a song file that assigns the 32 bit versions of these plugins, BandinaBox will automatically load the 64 bit version. Song files will also save backwards compatible.TGS data so 32 bit versions of BandinaBox will load the 32 bit version of these plugins. If this is selected, any MIDI tracks will be left as MIDI and not rendered to wave which takes time. This would cause some actions to hang or not work at all. All files are now digitally signed. This will be used as the default synth in BandinaBox. By default, this setting is turned off. SampleTank 3. Note that the bug can cause the driver to remain open after using BandinaBox, so this bug fix might require you to restart your computer. This should only be necessary for Windows Vista or XP.

<https://cottonsauction.com/images/breadman-pro-model-tr875-manual.pdf>



Also, highlight a region of the chordsheet first to generate just that section as a multiriff SampleTank 2, if not running as administrator. Also, the countin will be played in the wrong tempo, sound distorted, and cause BandinaBox to be visually out of sync. BandinaBox or RealBand MusicXML files can be loaded to drum notation. Various RealTracks and style fixes and improvements. Recommended for most DAWs, unless they only support VST2. This is installed to bb\BBPlugins\Files\. This exe is useful if a DAW doesn't support drag and drop, for troubleshooting, and for people who want a very simple BandinaBox program just with Chordsheet and file generation, with drag and drop to Explorer. Installed to bb\BBPlugins\Files\. If you need these files, copy them from here to your VST folder. It may appear to be closed, but an instance of bbw.exe or bbw64.exe will still be active in the Task Manager. Use the MiscMore dialog in StyleMaker to set velocity changes in MIDI styles. This only happened when using WAS as audio driver type. Fixed Bass AmericanaSlow16thsByron bad chords. A few styles incorrectly showed missing Drums. Previously you could only use letters AZ, but now you can use 19 as well. This lets you select a bit rate for compressed audio types M4A, MP3, WMA. This might still happen, but the song size limit has doubled. This would cause superscript extensions to sit too high above the roots. The user might click Cancel because it appears that the driver is already selected. These are now balanced. A button has been added to stylemaker. This bug only effected nonEnglish versions. This would cause an incorrect tempo map to be made afterwards. If possible, you can choose to keep the current style, but the time signature of each bar will be set for you. This applies to the Big Piano, Guitar, Mixer, Plugins, and Video window. This would cause the linebased lyrics to be converted to barbased lyrics again the next time the song was opened.

<http://cqitracker.com/images/breadman-plus-user-manual.pdf>



Notation, Guitar, Big Piano would not select the track radio or mixer panel. Here are some improvements of the new mixer Clicking on the bottom of the key will play maximum velocity 127, and clicking on the top will play minimum velocity 30. When unsoloing a track, the previous Mute state of all the tracks will be returned. Also, when a track is virtually muted, it will display a different Mute button image than if it is actually muted. This means that more than one track can be Soloed. Leftclicking will cause the old behaviour that track will be the only solod track. A flash message explaining why will be displayed if the mouse is released over the quadrant. C7b9 on the chord sheet. Cmi7 instead of C7 on the chord sheet. New buttons, and a few that have been altered will remain in English until official localized patches are ready. VST plugins such as JamStix, Addictive Drums, EZ Drummer, and RapidComposer were previously not receiving MIDI synchronization information from BandinaBox eg. This allows, for example, plugins like JamStix Virtual Drummer to generate and play drum arrangements in realtime. More information about Xtra Styles. Now it should be more clear if the user needs a different version of QuickTime, or if it is not installed. In both cases the user is presented with a link to a page where they can install any version. Previously this option was always true, and could not be changed. If enabled, the currently selected cell will be highlighted instead of just outlined. This feature is useful for JAWS Screen Reader users. Entering a dim or dim7 chord would result in a dim5 chord. Entering a dim5 chord would result in no chord. An example plugin is XLN Addictive Drums 2. An example plugin is the Roland soundCANVAS VA. The new limit is 10000. This allows a specific font size percentage to be applied to Bar Lyrics in the leadsheet. This makes plain rests easier to see. They are at consistent levels with similar styles and should be easier to mix.

For smaller screens it should default to 12. This should only happen if there is only 1 chorus in the song. This could cause the MIDI latency setting, and the audio latency setting to both be set to improper values. This may be more noticeable on some machines than others. Previously this setting was always enabled and could not be changed by the user. After playback has stopped, a green flash message will warn the user of audio stuttering, and suggest an increased audio latency setting. If enabled, and there is audio stuttering detected, a warning flash message will be displayed after playback has stopped. This only applies to MME audio drivers not ASIO. This color can be set in Display Options by selecting Bar Settings indicator in the color picker. These were the features effected by this bugThis would only happen with low resolution monitors. Height and Widhts of Loops list increases. This is intended to avoid conflicts and reduce the chance of failed installs. Allows user to redownload a file if they choose to. This could cause a transpose amount other than zero before an audio track was added. Thru or Audio. Thru or Audio or toggling fullscreen mode. Codec selection now available.Always renders Video as stereo now. For example, you can make a backing track for a cool chord progression, and upload it to YouTube for others to play along to. Do a visual transpose and upload a second version for Bb tenor sax players. To close it, right click on the icon white and green musical note in your task bar bottomright of your computer screen and select Exit. Drag the window to the height, width that you want. There are also preset buttons for

40,40,75,100% of piano size in the big piano options dialog. Entry of title was sometimes opening a text entry IME dialog. To close it, right click on the icon white and green musical note in your task bar bottomright of your computer screen and select Exit.

<https://laneopx.com/wp-content/plugins/formcraft/file-upload/server/content/files/1626f0f059b6a7---bosch-sensixx-comfort-air-system-iron-manual.pdf>

Now if you want to stop that mode, actions like changing the track, or the notation mode will reset it so that clicking a note isn't in the guitar tab mode still. Clicking on tab in editable notation after setting tracktype to guitar, will then set the next note to be inserted on that string. This makes it difficult to see the numbers in this format. Here is another example Helicon harmonies. This also adds to the notation if in editable notation mode at the current time. Same for WAV, Prefs, ChordBuilder, RealTracks and RealDrums buttons. Press Ctrl T, and the top toolbar disappears. This makes the chord screen and notation window, audio edit, piano roll full screen. This is most useful for people with lores displays, where the toolbars are taking up too much of the screen, or those who want a clean look. If you set this, most options need to be done via menus, or pressing CtrlT again to toggle back the full display. Right click to type in the value. This feature was not previously documented. In RealDrums, Prefs there is a setting for Amount of Reverb to RealDrums. Normally no reverb is added to Drums. But if you want some added, you can set it here. This feature was not previously documented. RealDrums Preferences Adjust Push Velocity. This makes a dB adjustment to RealDrums drum pushes there was already one for shots, just not pushes. The strings styles now have much more varied playing and can play complex chords. Simple arrangements are also available. This was a requested change, to have a cleaner look on the mixer. Right click or Shift Click now changes by 1, without spinning unpredictably to higher values. Text doesn't highlight implying that it's editable. Install the update to your existing bb folder. To close it, right click on the icon white and green musical note in your task bar bottomright of your computer screen and select Exit. For example, if you set to tune guitar down by 1 semitone, a song entered in E will display in E, but play in Eb.

Variation names show up in filter for nonEnglish RT searches. These are updated if you already have those RealTracks installed. The total number of RealTracks with simple variations is now over 400. There are new RealStyles that use these. Note Set 2 is only included in the 16PAK upgrade. MIDI softsynth timing with large ASIO buffers is much better, although still will remain dependent on the speed of the computer, the nature of the DXi or VSTi synths used, and the quality of the ASIO drivers. They can be opened from the AmpliTube category near the bottom of the StylePicker. Also, a tip about FileOpen Audio as a means to convert a file. Filter the list of styles by any text string. Multiple terms allowed. e.g. Miscellaneous fixes related to RealTracks Sets 122136. Simpler bass variations weren't playing slash chords correctly. Memory freed after song generates. It requires that you already have the Coyote installed. This is primarily intended for 64bit Windows Vista and 7 users who are unable to use the Roland VSCDXi, since the VSC is only compatible with 32bit versions of Windows. This is primarily intended for 64bit Windows Vista and 7 users who are unable to use the Roland VSCDXi, since the VSC is only compatible with 32bit versions of Windows. This build 304 is the same as build 303, except for a small fix for nonEnglish versions. If you are already using English build 303, there is no reason to install build 304 although there is no harm in doing so. Note This won't erase song realtracks set for Melody or Soloist, unless they are used in the style. So if you want to add a song RealTracks instrument that sticks as you use different styles, either freeze the track, or use the melody or soloist track. Also, songs with MIDI tracks now render to WAV files about 20% faster. For example, you can make a Jazz Ballad style tempo 65 that uses a Sax Soloist at tempo 140 playing double time.

For example, if you have a Bluegrass style at a typical tempo of 130 that is 16ths note based, and you would prefer it as a style that is 8th note based at a typical tempo of 260, you can do this in the

StyleMaker by selecting the menu item StyleExpand. StyleReduce is available also for styles that you want to reduce from 8th notes to 16th notes. All Stride, Rehearsal. Note if you have lyrics in text format, it is easy to paste them in as a Leadsheet Memo, and now you will see them on the Big Lyrics Window as well. Typing special words, instead of chord names, will make the following settings. This only applies to the chordsheet, since notation windows always in Chord entry mode. Type word Song followed by a filename, or partial filename, and the song will get loaded in. e.g. type c:\MySong.sgu to load in that exact style name, Type bossa to load in the first song with bossa in the name AFTER the current song name, in the current folder. Note this fix applies to the main screen, not the F5 dialog. This is primarily intended for 64bit Windows users who are unable to use the Roland VSCDXi, since the VSC is only compatible with 32bit versions of Windows. Tags are meant to work on songs with more than 1 chorus. This is an option available by pressing the RealTracks Toolbar button Select Better RealTracks. Yellow Message now appears if RealTracks are selected, but better RealTracks are available for the current tempo. this message can be disabled in PrefsRealTracks RealTracks button on the toolbar now shows a menu, RealTracks picker, RealTracks Prefs, and Select Better RealTracks for this tempo. So a DragDrop panel has been added to the top left of the screen. This allows you to Drag n Drop to these sequencers in 2steps. Note that for other sequencers RealBand, Sonar and Windows Explorer, you can still DragDrop directly from the track to the DAW in 1step. Previously, embedded Bank changes werent stripped as well.

It also allows functions such as importing CD audio tracks to work without elevating privileges rightclick, run program as an administrator. Updated Nov 15, 2009 Improved support for newer RealTracks styles. To record audio and MIDI together, either use the menu on the audio window, or ShiftClick on the Record Audio button. A message to this effect is added in the audio record dialog. This is a new category in the StylePicker, and it contains new styles that are intended to be commonly used RealTracks. It checks your installation to find out if RealTracks are properly installed, or if any files are missing. The font for the song memo is size selectable. If the file c:\bb\NumberedDeveloperFiles.txt exists, the DrumAudioResults.txt with information get numbered and written to c:\bb\Results folder Note This feature is only for those people developing their own RealDrums files. You need to create a c:\bb\Results folder first. This feature happens automatically on certain RealTracks, no settings are needed. RealTracks and MIDI style piano parts that are on the piano track will appear with handssplit right hand in red, left hand in blue on the Big Piano window, and in notation. There is a setting for this on the NotationOptions dialog. Now the audio track loops seamlessly, including when it is used with the conductor. Frozen songs now loop smoothly and are usable with the conductor. When a song is loaded, played or saved, a yellow hint message will appear if any RealTracks or RealDrums are missing, listing the files that are missing or not available in your installation. If saving a song, and Audio Base tempo is different than the Song Tempo, a warning message will show, asking you to confirm that you want to save it like this. F5 bar settings Notation on a new line now works for chord sections. Notation starts a new line on a part marker like the chord sheet. This can be disabled for a song or globally.

If you separate terms with a space, each term is searched for separately. Note A chord would get added to the ending bar if you press Play and none exists, this is normal. Also shows path name in dialog. If you use a synth like the Ketron, and like to use higher patches that are not GM or GM2, then these features should be useful to you. Generates the bt0 stretch file at end of freeze, better messages, faster. Accessed as a button in the RealTracks Settings dialog. It verifies that File dates are the same, and BT0 tempo stretch files are correct. In this case, RealTracks generation time in earlier builds was very long IF User Account Control was enabled. Build 280 allows you to have UAC enabled if you prefer this, and RealTracks will still generate properly. Note that F8 also works for a hotkey for this. Now, after a long load, if you have located to some other place in the song and click the space bar, it will start from that location. Now there is a dialog, listing all RealDrums, with filtering, sorting by column, information name, genres, time sig, feel, tempo range,, memos, user

editable memos, favorite lists and more. You can preview new RealDrums by double clicking, loading only the new real drums. Audition button will play the solo RealDrums, from the pgmusic.com site, so that you can hear RealDrums that you haven't bought yet. For example, play a song, and change the RealTrack as it is playing, and then resumes from the current point, by just regenerating the single track. Right click on Combo has setting Song changed, needs regeneration. Then replay will just replay the song. This isn't a permanent setting, but is a handy one to prevent a regeneration when you have only made a small change. Shift click on Replay will play and never regenerate the song, even if chords have changed So if you type major triads for a song, but want any soloists to play as if they were dominant 7ths, use this setting.

Type in your own comments, and memos, and you can also filter by these comments. The time it takes to generate the RealTracks is now 3X faster. Since you can free up hard drive space previously occupied by RealDrums and RealTracks WAV files, many users will find that the new version uses up much less hard drive space than previous versions. Previous version was mono. Up to 7 RealInstruments at once in a single style! Lists can be sorted or filtered by any column. For example, the Metal Guitar Soloist can have a tonal center controlled by the user, different than the song chords. So that the Metal Guitar can be soloing over a G chord, while the chords of the song are G F G Bb for exmple. WAV files are no longer needed, as the program can use the much smaller WMA files. But if you prefer to use WAV files slightly higher fidelity and slightly faster operation, you can install or archive them on a global or folder by folder basis with these commands. The patch will install newer bt0 files to your RealTracks folder. To do this, press the WAV button and select One WAV file per Track. Most RealDrums styles starting with RealDrums set 5 contain many instrument variations brushes vs. This can be done in a number of ways. 1 RealDrums style saved with a song FileSave with patches dialog, 2 RealDrums style saved with the StyleMaker, or 2 Global option in the RealDrums dialog. In the RealDrums Settings dialog, there are now buttons that will, for a chosen RealDrums style, enable you to 1 play the RealDrums demo song, 2 show a menu of BB styles that would work with the Real Drum style and 3 play a song demo of various BB styles that work with the Real Drum style. Now you can choose any folder e.g. eDrums for your RealDrums. This allows you to, for example, conserve space on your C\ drive. Now they can render a batch of songs, which will all save separate TXT files, useful for analyzing their styles. Also, Bars Blocked limit increased to 2,000 bars.

This insures that you'll always hear the correct melody instrument for the demo. Can renumber bars at any time. Automatically attempts to find a valid Bar One location. Often 2 taps are enough for the entire song. This feature never moves barlines, just reinterprets inside selected bars. This allows you to remix an existing MP3, by adding a BB style to the MP3. For example, add strings or congas to an existing song, or a trumpet solo, or chord reharmonization etc. and they stay in sync for the whole song, and can be all played or rendered to a WAV file. The tempo map can be added, removed, readded etc. This is useful for a song from the Audio Chord Wizard, where you forgot to set the key signature or for any song without the key signature set. Set Bar One is automatically applied to the first MouseDragged Barline, if Bar One has not already been set by the user. This clears all the users barline edits, and performs the equivalent of a Set Bar One on wherever the current Bar One location happens to be. Audio label is either displayed white no audio track, yellow audio track present, or red audio track muted. Then a dialog is presented giving the pitch estimate in cents 100ths of a semitone, a confidence rating. The results dialogs gives an opportunity to either Accept the Tuning Estimate set the ACW Tuning control to that value, or to Cancel and not accept the Estimate. This feature improves chord detection accuracy on many songs. Note The Tuning Estimation only works on one bar, because analysis of larger sections would take a very long time. ACW should analyze audio and draw the screen updates two or three times faster than previous versions. When the user returns the chords to BIAB and saves the song, BIAB saves information about the Bar One location and edited Bar locations inside the song file. If the user later reopens the

saved song into ACW, ACW will now load the saved Bar One and Bar Edits from the previous session.

<http://schlammAtlas.de/en/node/15845>